

Acid Stain Colors



Malay Tan

Buckskin suede tone with caramel marbling



Cola Stain

Reddish brown resembling old leather



English Red Stain

Terra cotta with rust and soft brown hues



Golden Wheat Stain

Amber hued undertones



Black Stain

Tortoise shell black with brown marbling



Aqua Blue Stain

Soft blue patina with undertones of green



Green Lawn Stain

Soft grey green resembling aged Italian marble



Vintage Umber Stain

Rich earthy brown

Standard Colors for the Concrete Industry

"These colors can be used for concrete stamping and crete tiles"



Kool White



Adobe Buff



Harvest Sand



Peach



Safety Yellow



Misty Mauve



Coral



Sun Buff



Sand Buff



Desert Tan



White



Antique White



Maplewood



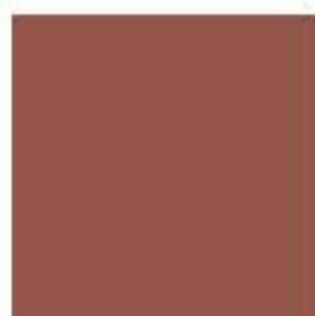
Autumn Brown



Rust Brown



Plum



Brick Red



Terra Cotta



Tile Red



Redwood



Sabal



Pewter



Sun Gray



Gray



Charcoal



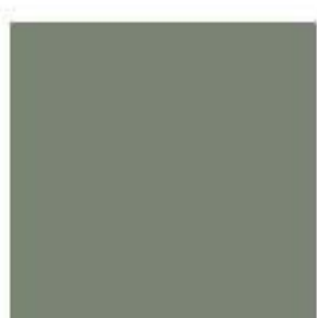
Sky Blue



Teal



Seafoam Green



Slate



Philly Blue

Note: When installed, colors shown are represented as close as possible. Variations can be expected due to differences in cement, aggregates and method of application.